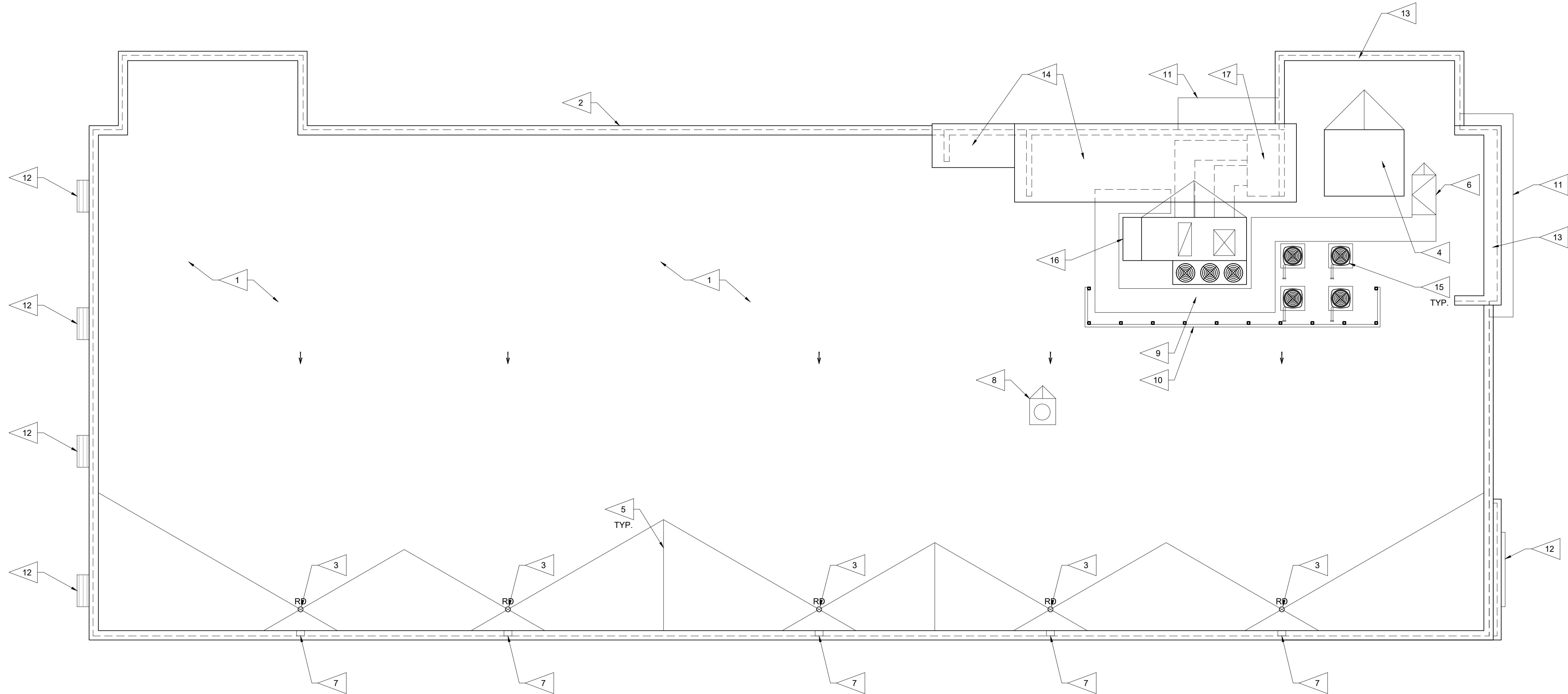


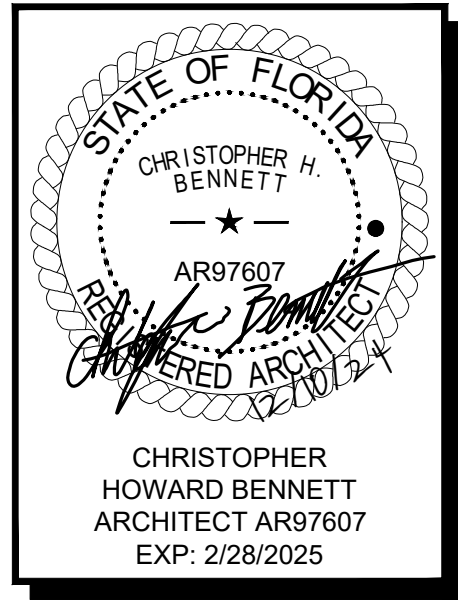
GENERAL NOTES:	KEY NOTES:
<div>1. MEP PENETRATIONS – SEE MEP DRAWINGS FOR MECHANICAL &amp; PLUMBING PENETRATIONS.</div> <div>2. CURBS AND FLASHINGS – ALL CURBS AND FLASHING SHALL BE WATER TIGHT TO AN ELEVATION 4" ABOVE THE TOP OF THE ROOF OVER-FLOW SCUPPERS.</div>	<div>1. TPO ROOFING SYSTEM - MECHANICAL FASTENED &amp; HEAT WELD SYSTEMS OVER TAPERED INSULATION. COLOR - WHITE</div> <div>2. PARAPET - HEIGHT VARIES, SEE EXTERIOR ELEVATIONS.</div> <div>3. ROOF DRAIN - SEE PLUMBING DRAWINGS. COORDINATE LOCATION WITH INSTALLATION REQUIREMENTS WITH STRUCTURAL CONCRETE INSTALLER.</div> <div>4. ELEVATOR PENTHOUSE – HEIGHT AS REQUIRED FOR CLEARANCE BY ELEVATOR SUPPLIER. SLOPE TOP TO DRAIN. COVER TOP AND SIDES WITH ROOFING MEMBRANE.</div> <div>5. ROOF CRICKET - TAPERED INSULATION CRICKET SHAPE TO DRAIN.</div> <div>6. ROOF HATCH - MINIMUM 16 SF OPENING AND ALTERNATING TREAD STEEL STAIR. BILCO NB-50T OR EQUAL INSULATED ACCESS HATCH. LAPEYRE BRAND STAIR - STEEL ALTERNATING TREAD STAIR 68 DEGREE ANGLE OR EQUAL. PROVIDE SAFETY RAIL ON SIDES WHERE HATCH IS WITHIN 10 FEET OF ROOF EDGE.</div> <div>7. ROOF DRAIN OVERFLOW SCUPPER 4"HX6"W MINIMUM OPENING. COORDINATE SIZE WITH LOCAL RAIN FALL.</div> <div>8. LINEN CHUTE VENT &amp; CURB.</div> <div>9. ACCESS WALKWAY PADS - EXTEND TO ALL MECHANICAL EQUIPMENT LOCATIONS. APPROXIMATE PATH SHOWN, COORDINATE WITH EQUIPMENT INSTALLER.</div> <div>10. EQUIPMENT SCREENING PANELS W/ ANCHORAGE &amp; BRACING AS REQUIRED TO WITHSTAND 150 MPH WIND LOAD. COORDINATE MINIMUM HEIGHT W/ EQUIPMENT. MINIMUM HEIGHT TO BE EQUAL TO OR GREATER THAN THE TOP OF EQUIPMENT. COORDINATE WITH EQUIPMENT PROVIDER/INSTALLER.</div> <div>11. PER-MANUFACTURED ROOF CANOPY (BELOW).</div> <div>12. PRE-MANUFACTURED LOUVERED ALUMINUM SUNSHADE (BELOW) - SEE EXTERIOR ELEVATION SHEETS A7.1 &amp; A7.2.</div> <div>13. RAISED PARAPET - FLAT TOP PARAPET. SEE EXTERIOR ELEVATION SHEETS A7.1 &amp; A7.2 FOR HEIGHTS AND SLOPE.</div> <div>14. RAISED PARAPET - SLOPED TOP PARAPET. SEE EXTERIOR ELEVATION SHEETS A7.1 &amp; A7.2 FOR HEIGHT AND SLOPE.</div> <div>15. CONDENSING UNIT - APPROXIMATE SIZE AND LOCATION.</div> <div>16. HVAC RTU - HVAC ROOF TOP UNIT. APPROXIMATE SIZE AND LOCATION.</div> <div>17. HVAC DUCT SHAFT - HEIGHT AS REQUIRED BELOW RAISED PARAPET TO ACCOMMODATE RTU DUCT WORK.</div> <div>18. CMU WALL BELOW AT 1ST FLOOR.</div>



ROOF PLAN 1  
SCALE: 1/8" = 1'-0"

JOB NUMBER	22031
ISSUE DATE	12-10-24
REVISIONS	

CDG II, L.L.C. © 2024



CHRISTOPHER  
HOWARD BENNETT  
ARCHITECT AR97607  
EXP: 2/28/2025

CONDO HOTEL  
872 E MCNAB ROAD  
POMPANO BEACH, FLORIDA 33060  
ARCHITECTURE | PLANNING | INTERIOR DESIGN | PROCUREMENT  
CENTRAL DESIGN GROUP II • 3200 PENN TERRACE, SUITE 100 • COLUMBIA, MISSOURI, 65202 • TEL: 573.441.9391



centraldesign  
group II

ROOF PLAN
A6.1

P&Z

PZ23-12000045

3/26/2025